

BOX

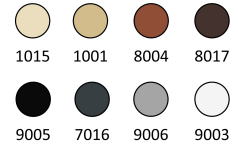
IMF12-2A-10a30H

Application

A versatile family of floodlights designed for both flood and accent lighting of facades, this series integrates all of INTILED's advanced technical solutions into a perfectly balanced and streamlined housing.

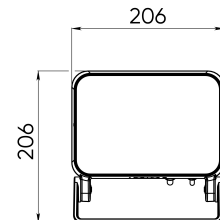
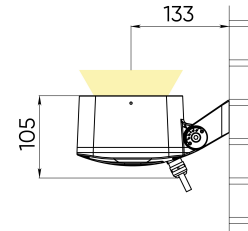


Standard RAL colors



Standard coating type
moire

Light color	Amber
CRI	
Color binning	±3 nm
Optics, degrees	10a30
Delivered lumens, lm	1 650
Voltage, V	230 AC 50 Hz
Wattage, W	28
Power factor	> 0,9
Electric class	I (first)
Protection class	IP66
Operating temperature, degrees C	-40 ... +55
IK rating	IK09
Control, protocols	On/Off
Control, pixel size	
Lifespan, hours	Not less than 50 000
Warranty, years	5
Dimensions, mm	206x206x105
Weight, kg	3,5
Content of delivery	luminaire, package, passport, mounting instructions



Mounting

Surface mounted, on a swivel bracket.

Materials

Housing, bracket — aluminum casting alloy, covered with powder paint; protective glass — silicate tempered; metalware — stainless steel.

Integrated technologies

ColorPro® technology is a software algorithm that optimizes the use of the luminaire's available power to deliver peak brightness.

EternalTechnology® is a continuous monitoring of the internal temperature of the lighting fixture through the system of integrated sensors.

Truelight® technology - a comprehensive suite of solutions designed to deliver flawless lighting effects.

Aquatech® technology – a multi-stage protection technology safeguards luminaires against water ingress.

COOLight® technology is aimed at increasing the efficiency of lighting fixtures.

Additional codes definition

Accessories

brackets

BOX-01-100 - for the pole, swivel (1 hole)

BOX-02-100 - for the pole, swivel (2 holes)

BOX-03-75 - for the pole, static

grids

BOX-01-030 - 20 cells, 30 mm height

BOX-02-050 - 6 cells, 50 mm height

tubes

BOX-01-090 - 90 mm height

BOX-01-140 - 140 mm height

louvres

BOX-02-050 - 50 mm height

BOX-02-070 - 70 mm height

BOX-02-100 - 100 mm height

Compatible control system devices