

# BOX

## IMF24-1RGBW40-125RH

### Application

This family of spotlights is crafted for dynamic flood and accent lighting of facades, seamlessly incorporating all of INTILED's cutting-edge technical innovations into a meticulously balanced and compact design.

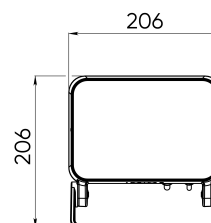
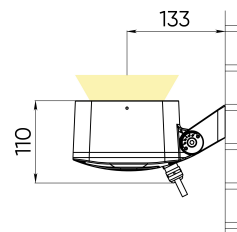


<b>Light color</b>	red + green + blue + white 4000 K	
<b>CRI</b>	> 80	
<b>Color binning</b>	±3 nm, 2 MacAdam steps	
<b>Optics, degrees</b>	125	
<b>Delivered lumens, lm</b>	Red	280
	Green	440
	Blue	170
	White 4000 K	550
	All On	700
<b>Voltage, V</b>	230 AC 50 Hz	
<b>Wattage, W</b>	31	
<b>Power factor</b>	> 0,9	
<b>Electric class</b>	I (first)	
<b>Protection class</b>	IP66	
<b>Operating temperature, degrees C</b>	-40 ... +55	
<b>IK rating</b>	IK09	
<b>Control, protocols</b>	DMX-512 + RDM	
<b>Control, pixel size</b>	1 luminaire = 1 pixel	
<b>Lifespan, hours</b>	Not less than 50 000	
<b>Warranty, years</b>	5	
<b>Dimensions, mm</b>	206x206x110	
<b>Weight, kg</b>	3,5	
<b>Content of delivery</b>	luminaire, package, passport, mounting instructions	

**Standard RAL colors**

1015	1001	8004	8017
9005	7016	9006	9003

**Standard coating type**  
moire



### Mounting

Surface mounted, on a swivel bracket.

### Materials

Housing, bracket — cast aluminum; protective glass — tempered glass.

### Integrated technologies

ColorPro® technology is a software algorithm that optimizes the use of the luminaire's available power to deliver peak brightness.

EternalTechnology® is a continuous monitoring of the internal temperature of the lighting fixture through the system of integrated sensors.

Truelight® technology - a comprehensive suite of solutions designed to deliver flawless lighting effects.

Aquatech® technology – a multi-stage protection technology safeguards luminaires against water ingress.

COOLight® technology is aimed at increasing the efficiency of lighting fixtures.

## **Additional codes definition**

### **Accessories**

#### brackets

BOX-01-100 - for the pole, swivel (1 hole)

BOX-02-100 - for the pole, swivel (2 holes)

BOX-03-75 - for the pole, static

#### grids

BOX-01-030 - 20 cells, 30 mm height

BOX-02-050 - 6 cells, 50 mm height

#### tubes

BOX-01-090 - 90 mm height

BOX-01-140 - 140 mm height

#### louvres

BOX-02-050 - 50 mm height

BOX-02-070 - 70 mm height

BOX-02-100 - 100 mm height

### **Compatible control system devices**

LightCAD software key x2

LightCAD software key x8

LightCAD software key x32

LightCAD software key x64

LightCAD software key x128

LightCAD software key x512

Controller LED-IPCe

Controller LED-IPCs

Converter U-Box 8

Converter U-Box 4

Converter Din-Box 8

Converter Din-Box 6

Converter Din-Box 2

Splitter DMX (B1T2)

Splitter DMX (B4)

Converter UCS-ILCS