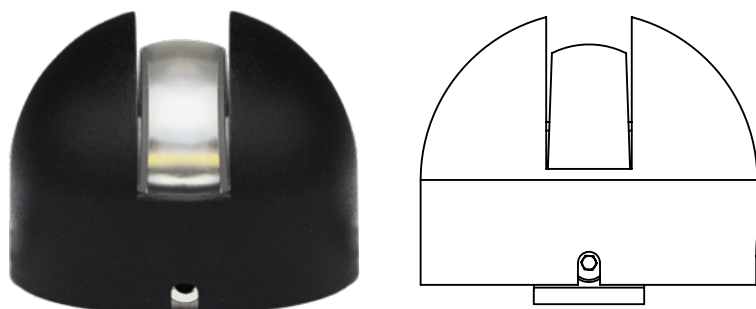
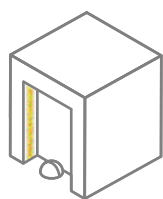


# EDGE-mini

An ultra-small luminaire for monochrome illumination of window openings. One tiny fixture can provide a uniform illumination of the entire width of the window opening with an  $8 \times 180^\circ$  beam. It can be used to illuminate the relief elements of the façade or interior.

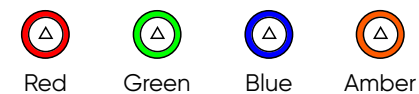


## Application



lighting effects

# EDGE-mini



8x180°

## CRI

≥80 (for white color)

## Color Binning

2 MacAdam ellipses for white,  
±3 nm for color LED

## Voltage

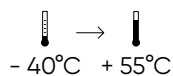
12 V DC

IP65



## Lifespan

not less than 50 000 hours



## Controls, protocols

PWM

## Controls, pixel size

1 luminaire – 1 pixel

## Materials

housing – aluminum  
plate – stainless steel

## Standard RAL colors



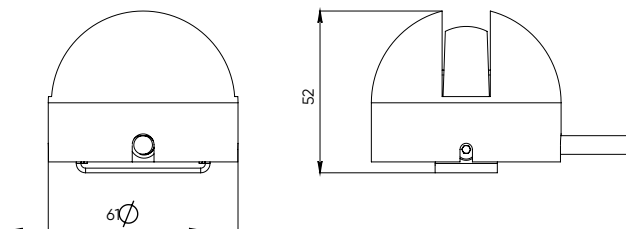
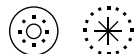
## Standard coating type

moire

## Customization

connectors IP68  
cable length up to 5m  
light color, wattage and luminous flux customized  
for a specific project

## Available custom versions



weight, kg  
0,3

# EDGE-mini

## 1. Select a model

Serial code	Color	W, max	lm, max
ILF2-1,5	white	3,9	110
	color mono	4,2	60

## 2. Create an article number

Serial code	Color	Optics	Controls*	Supply voltage **
ILF2-1,5	W30 W40 W50 R G B A	8x180	D	L12

\* D – protocol PWM

\*\*L12 – supply voltage 12 V DC