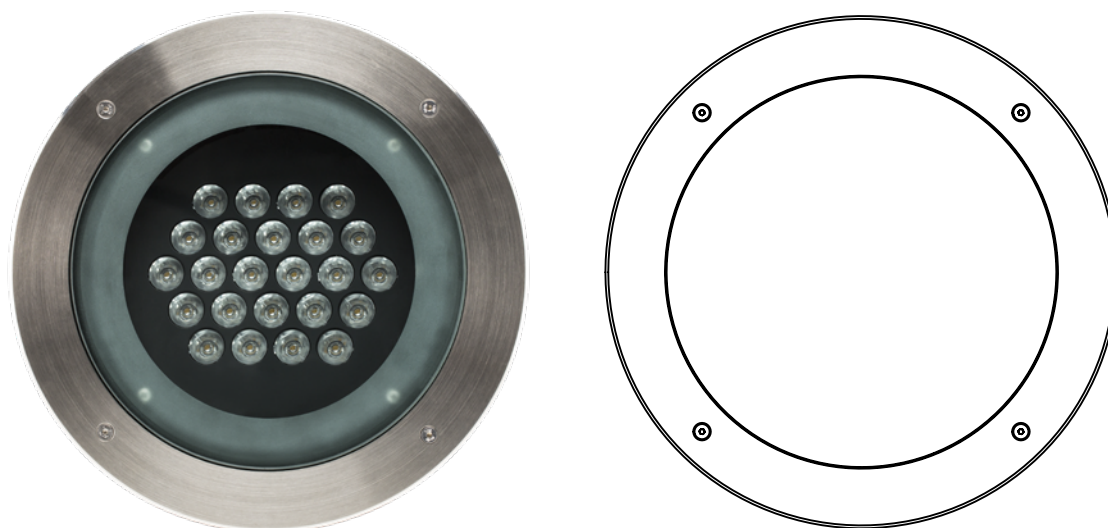
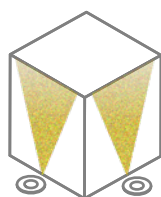


IntiGROUND

Mainly used for floodlighting of façades from the ground. High-quality color mixing is achieved due to a specific LED placement. It provides the possibility of adjusting the light beam by changing the angle of the LED board (up to 15°).

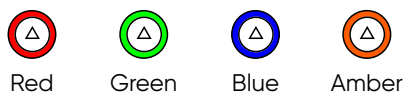


Application



accent

IntiGROUND



10° 10x30° 10x50°



30° 60° 80°

CRI

≥80 (for white color)

Color Binning

2 MacAdam ellipses for white,
±3 nm for color LED

Power factor

>0,9

Voltage

230 V AC

IP67



Lifespan

not less than 50 000 hours

- 40°C + 55°C

Controls, protocols

DMX-512

Controls, pixel size

1 luminaire – 1 pixel

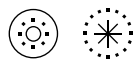
Materials

housing – pressure-cast aluminum, covered with powder paint
 protective glass – hardened, 15mm thick, with silicon sealer
 mounting curb – ABS plastic
 mounting plate – stainless steel
 decorative frame – polished stainless steel

Customization

for monochrome: controls DALI, PWM,
 DMX-512, DMX-512 + RDM; through-wiring
 connectors IP68
 cable length up to 5m
 voltage: 12, 24, 48 V DC
 optics, light color, wattage and luminous flux
 customized for a specific project

Available custom versions

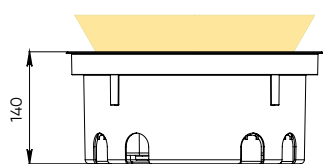
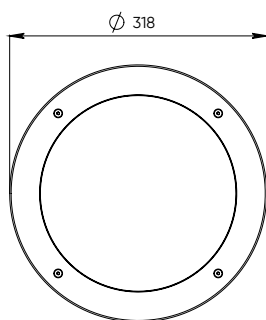


Technologies



Maximum static load

5 000kg



weight, kg

7

IntiGROUND

monochrome

1. Select a model

Serial code	Color	W, max	lm, max
IRG24-1	white	29	2400
	color mono	31	1600

2. Create an article number

Serial code	Color	Optics	Controls*	Supply voltage**
IRG24-1	W30	10	not available C	H
	W40	10a30		
	W50	10x50		
	R	30		
	G	60		
	B	80		

* C – protocol DMX-512

**H – supply voltage 230 V AC

multichannel

1. Select a model

Serial code	Color	W, max	lm, max
IRG24-1	RGB	28	1000
	RGBW	32	1650

2. Create an article number

Serial code	Color	Optics	Controls*	Supply voltage**
IRG24-1	RGB	10	C	H
	RGBW30	10a30		
	RGBW40	10x50		
	RGBW50	30		
		60		
		80		

* C – protocol DMX-512

**H – supply voltage 230 V AC